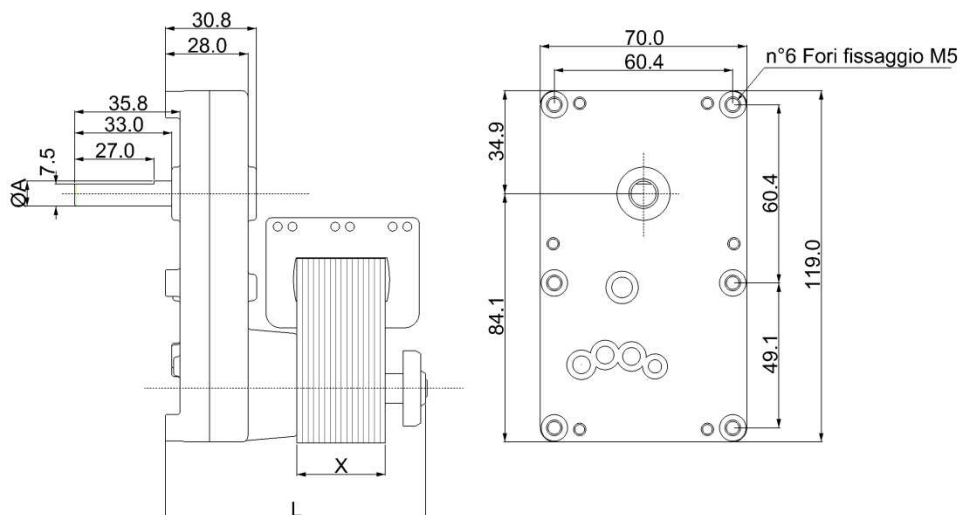


GEARMOTOR RANGE 55.N15



FEATURES

- single-phase asynchronous motor, 230V AC, 50Hz
- zama cover, Steel Mdp gears , not reversible
- fastening can be done through six (6) M5 holes
- available with output shaft $\varnothing 8.5$ mm and $\varnothing 9.5$ mm



CODICE CODE	TENSIONE NOMINALE	VELOCITA' SPEED	COPPIA MAX MAX. TORQUE	DIMENSIONI DIMENSIONS	
	NOMINAL VOLTAGE			(X)	(L)
	V (AC)	rpm	Nm	mm	mm
6007014	230	2,0	35,0	25,0	83,0
6007018	230	4,0	28,0	25,0	83,0
6007015	230	5,5	18,0	25,0	83,0
6007019	230	12,0	9,0	25,0	83,0
6007016	230	29,0	3,8	25,0	83,0
6007017	230	60,0	2,0	25,0	83,0