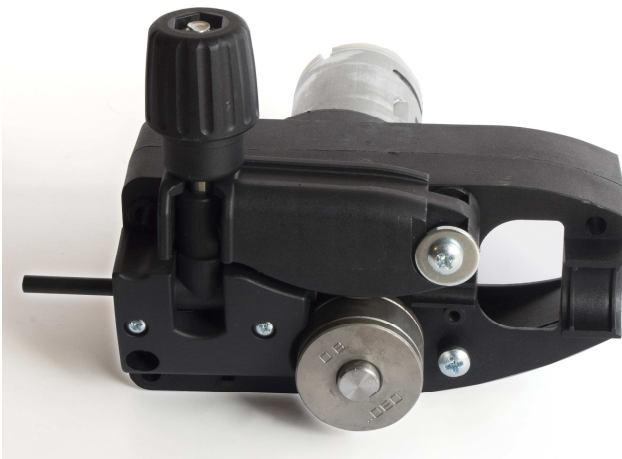


RANGE P.04 - 35W



| Caratteristiche elettromeccaniche Electromechanical features | |
|---|------------|
| Potenza motore – Motor power | 35 W |
| Tensione – Nominal voltage | 6÷24 V |
| Corrente massimo carico – Max load current | 1.8 A |
| Coppia massimo carico – Max. Load Torque | 1.4 Nm |
| Velocità massima – Speed | 19 m/min |
| Ciclo - Cycle | 25% |
| Ø rullo – Ø roll | 30 mm |
| Ø filo - Ø wire | 0.6÷1.2 mm |

